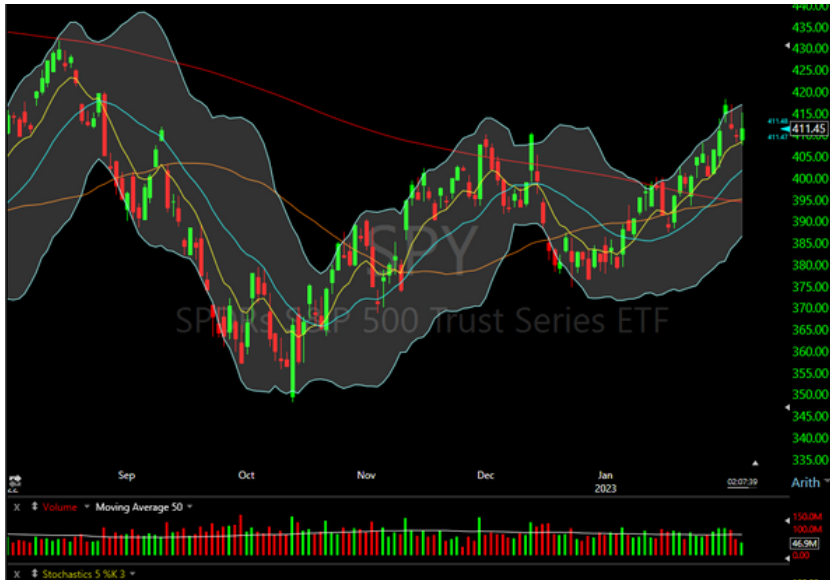


# BULLS SWING REPORT

## BULLISH ON STRONG EARNINGS



## MARKET COMMENTARY

The market is currently reacting positively to Powell's speech. If we close at these levels, we end a healthy two day pullback at extended levels. The market is very strong with breadth indicators like T2108 and equal weight ETFs showing extreme strength. The overall pattern across the indexes, tech, retail and financials are bottom formation breakouts that break downtrends.

We continue to focus on post earnings stocks that broke out or quickly reversed bad news. Big tech stocks are on watch.

## NEWS AND EARNINGS OF NOTE

- PINS EARNINGS GAP DOWN
- SWKS EARNINGS BREAKOUT
- TTWO EARNINGS BREAKOUT (REVERSAL OF AFTER HOURS WEAKNESS)
- POWELL SAYS DEFLATION HAS BEGUN BUT STILL MORE HIKES
- ZOOM LAYS OFF 1300 EMPLOYEES
- GOOGLE ANNOUNCES BARD AI TO RIVAL MSFT CHATGPT

## FEAR/GREED INDEX



### Other Key Events

**9:40 Powell Speech**  
**Other Fed Members Speak Today**

### WATCH-LIST

AAPL, MSFT, META, AMD, NFLX, GOOGL, SBUX, GILD, TEAM, BZH, ELF, SPOT, JPM, IP, SOFI, DOV, STLD, PCAR, AOS, ALGN, DOCS, ETSY, SE, SLB, OXY, FCX, ALLY, SWKS, BP, PINS, PATH, ADBE, OKTA, FVRR, UPS, SNAP

### Trading Game Plan

In this short term bullish market we continue to look for good pullback entries in stocks that have broke out or are in bottom formations. Moving from smaller to normal sized risk parameters.

### KEY SETUPS

- EARNINGS BREAKOUTS
- EARNINGS GAP DOWN REVERSALS
- BOTTOM FORMATION BREAKOUTS

Join Our  
Swing Trading Chatroom

# BULLS SWING REPORT

## MARKET BREADTH ANALYSIS



### T2108 Analysis

The 2108 Indicator is currently at highs showing extreme strength. Equal weight ETFs like RSP are confirming strength in underlying indexes.

## Market Swing Report Video



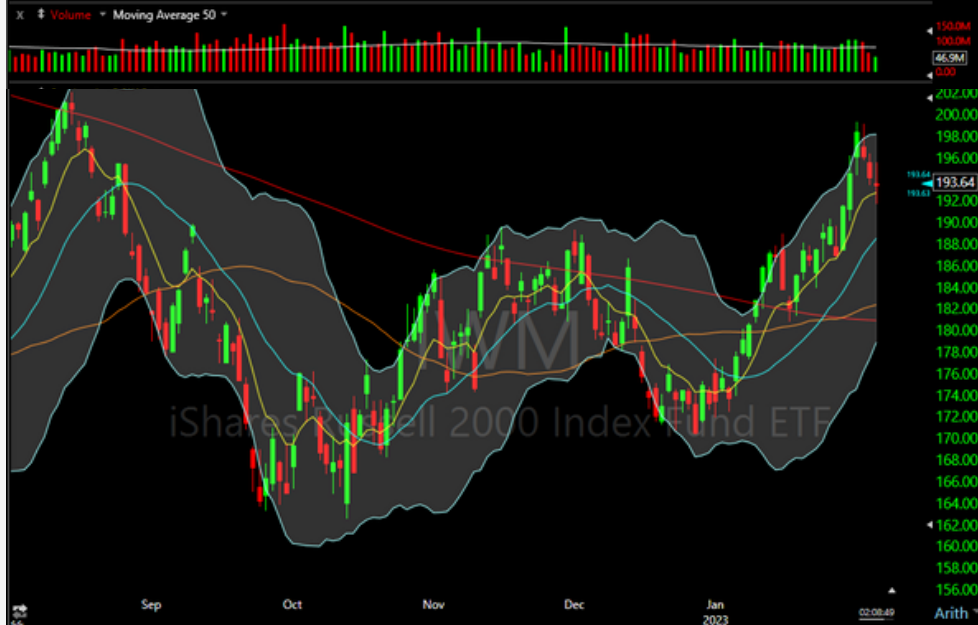
# BULLS SWING REPORT

## BULLS INDICES ANALYSIS



### \$SPY

The spy is currently above the 200ma forming a higher high and higher low. This breaks the topping pattern downtrend.



### \$IWM

IWM is currently above the 200ma forming a higher high and higher low. This breaks the topping pattern downtrend



### \$QQQ

The QQQ is currently above the 200ma forming a higher high and higher low. This breaks the topping pattern downtrend

# BULLS SWING REPORT

## BULLS MARKET HEALTH DASHBOARD

### Short Term (2 to 5 Days) Market Technicals

Major Indices	Trend	Momentum	Breadth Cycle	Aggregate Outlook
SPY	Bullish	Bullish	Bullish	Slightly Bullish
IWM	Bullish	Bullish	Bullish	Bullish
QQQ	Bullish	Bullish	Bullish	Bullish

### Long Term (2 to 4 weeks) Market Technicals

Major Indices	Trend	Momentum	Breadth Cycle	Aggregate Outlook
SPY	Neutral	Bullish	Bullish	Slightly Bullish
IWM	Neutral	Bullish	Bullish	Slightly Bullish
QQQ	Neutral	Bullish	Bullish	Slightly Bullish

Join Our  
Swing Trading Chatroom

# BULLS SWING REPORT

## Current Positions

Long/Short	Ticker	Entry	Target	Stop
LONG	AAPL	151.20	170	146

- FOCUS LIST BULLISH-STOCKS TO BE FAMILIAR WITH BUT NOT READY
- SPXL, TQQQ, NFLX, META, DXCM, IDXX, AMD, MSFT, MCK, LMT, BA, ORLY, ULTA, NKE, ISRG, ETSY, DECK, BURL, OKTA, NEM, MRNA, JNUG, NUGT, SLB, NBR, CVX, VLO, OXY, DECK HUYA, LLY, MRNA, SBUX, AMD, DE, CEIX, APA, HES, BABA, BIDU, HUYA, YINN, CELH, MNST, MRNA, TBBK, PI, PODD, IRDM, MEDP, SMCI, EXAS, CROX, FL, SKX, BBWI, LOW, FCX, UA, LULU, MCK, MEDP, BDC, DOCS, MNST, ADM, CENX, AA, TEX, TBBK, TSCO, MDB, FSLR.

## IMMEDIATE FOCUS- STOCKS AT OR NEAR TRIGGER

SBUX, META, MSFT, SPOT, ETSY, JPM



Join Our  
Swing Trading Chatroom