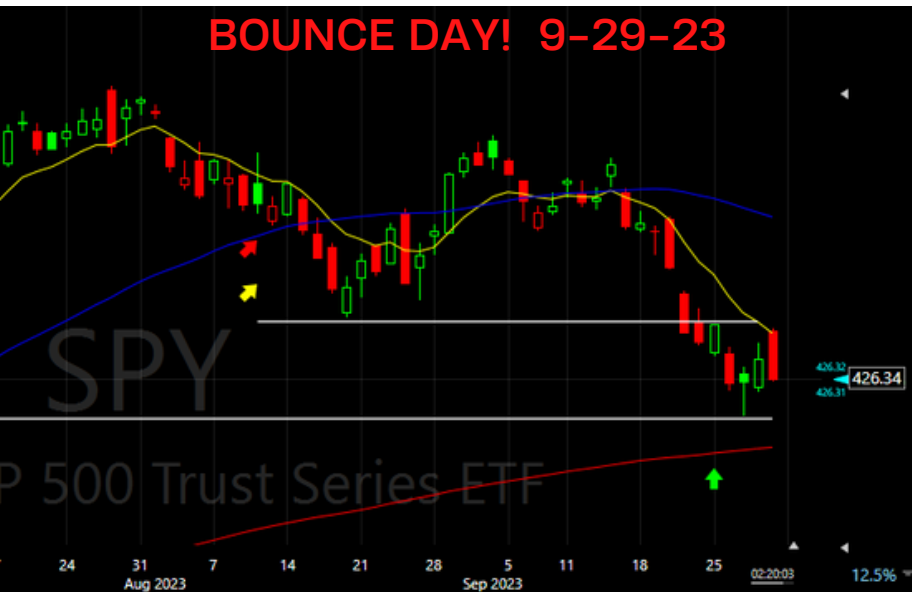


# BULLS SWING REPORT



## FEAR/GREED INDEX



### Key Events

No surprise that we are getting market volatility as we close out the week. Two major competing news events have bulls and bears battling at the key market ranges. Bulls are hanging their hats on better than expected PCE inflation data, which is the Fed's favorite measure. Bears are focused on the potential government shutdown.

For us it's all about the breakout or breakdown of the current range. SPY's Wednesday hammer is the bottom of the range while the 9ema is the top. Next week we'll watch these levels closely.

Stocks in play include: ROKU, TEAM, APPF, DNA, INFA, BILL, PDD

Additions to the New Watchlist: ZS, LULU, FTAI, CELH, AXON, ARGX, MANH, QLYS, FN, ACMR, BKNG, MMYT, MOD, ALV, GNTX, TDW, STNG, NOV, PUMP, BP, PBR, ESTE, VLO, SM, MPC, RIG, PFIE, OII

### KEY SETUPS

- TREND CONTINUATIONS
- RUBBERBANDS

### GAME PLAN

Caution post fed. Watch price action at key levels.

### WATCHLIST (PART 1/2/3)

ELF, IP, AIR, FDX, ODFL, MTRX, XPO, BBP, SKX, TXT, GWW, BWXT, PNR, PCAR, CAT, TEAM, FLS, VRSK, X, CDNS, OKTA, MNDY, ROKU, SBUX, ORN, FLR, PINS, GOOGL, AMZN, NVDA, ISRG, IOT, IONQ, RELX, ANET, AI, NOW, PLTR, URBN, LULU, ANF, JILL, WSM, PDD, CASY, MUSA, TJX, MYTE, MELI, CAL, COST, SFM, DKN, PANW, UBER, MDB, BSY, CRWD, WDAY, INTU, SNPS, PRO, APPF, GWRE, VRNS, DBX, CDNS, VMW, DNA, PATH, SHOP, ZM, BRZE, PCOR, NU, BILL, SOFI, DUOL, FRSH, INFA, MDNY, APP, ZS, LULU, FTAI, CELH, AXON, ARGX, MANH, QLYS, FN, ACMR, BKNG, MMYT, MOD, ALV, GNTX, TDW, STNG, NOV, PUMP, BP, PBR, ESTE, VLO, SM, MPC, RIG, PFIE, OII

# ***BULLS SWING REPORT***



## VIX

VIX is falling after a two day pop looking to close below Tuesday candle. We want to see continuation off this move.

Remember for the market to breakout of the downtrend we don't want to see any spikes. Ideally VIX starts falling this week.

## Swing Report Video